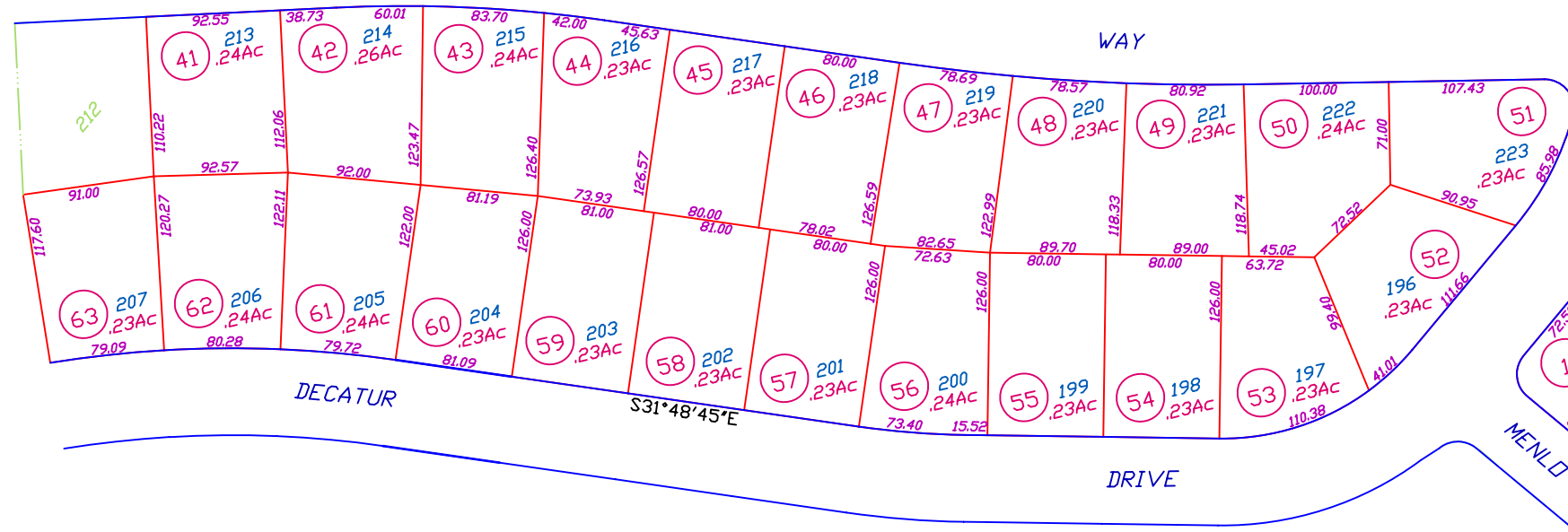
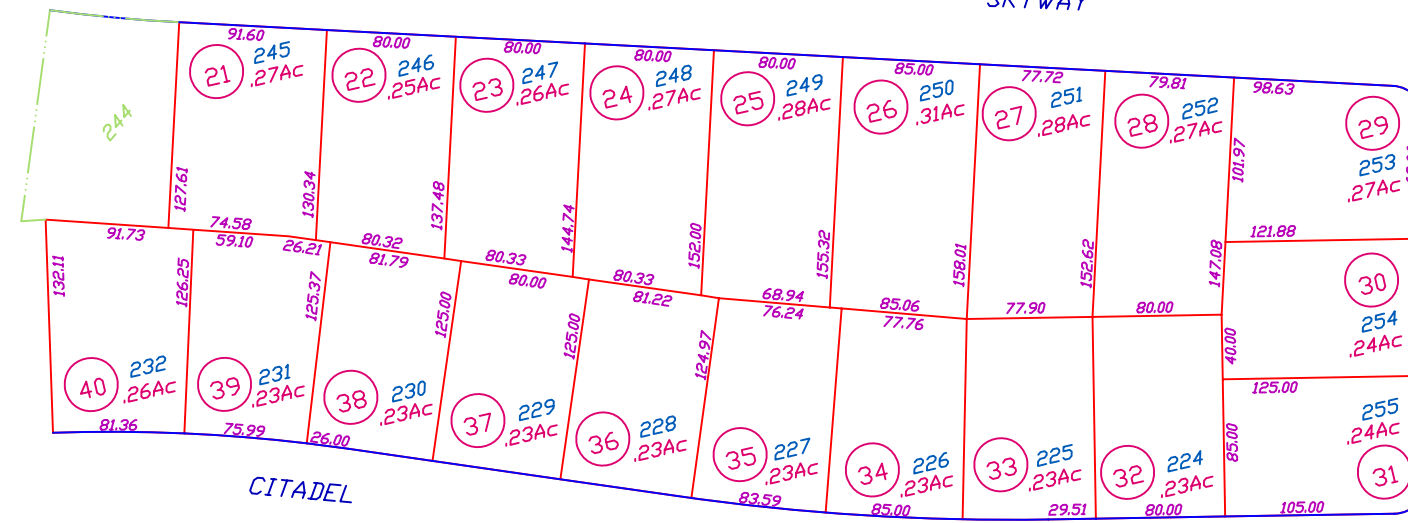
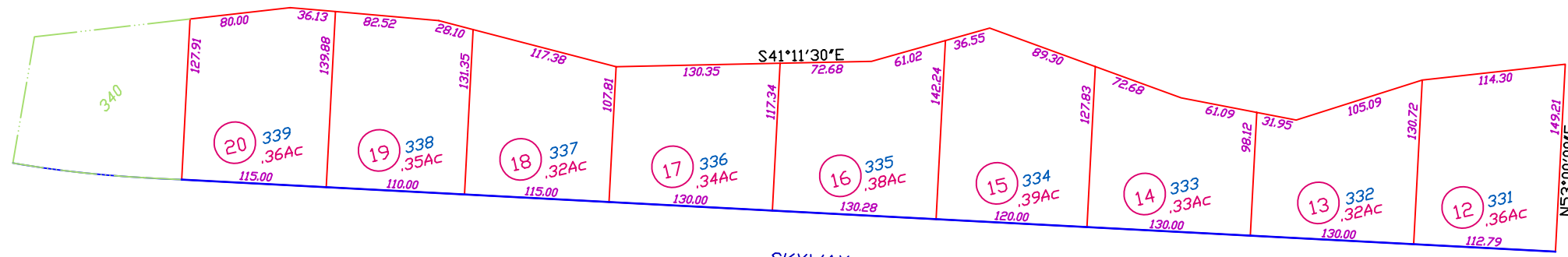
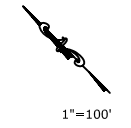


65-24



33

37

49

36

PARADISE PINES UNIT #4, 35 M.O.R. 97/101, 10-01-1970

All Assessor's maps are prepared for local property assessment purposes ONLY. Parcels shown thereon may not comply with State and local subdivision ordinances. No liability is assumed for use of Information shown on any Assessor's map. ALL ACREAGES APPROXIMATE PER RECORDED INFORMATION.

Butte County Assessor's Map
Book 64, Page 35

Created by:	DB	Created on:	02-25-2010
Revised by:	DB	Revised on:	02-25-2010
		Effective roll:	2010-11